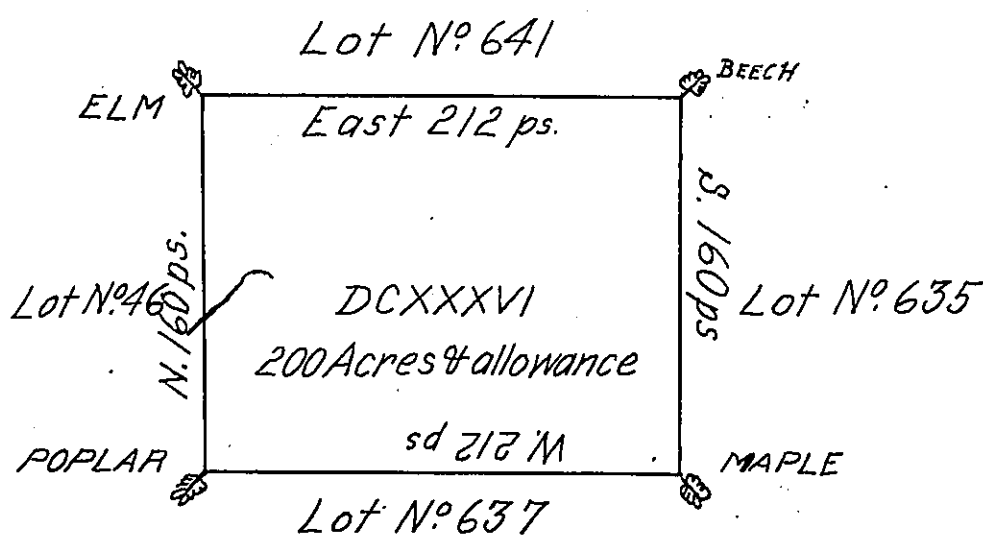


FORM No. 1.



In pursuance of an Act of General Assembly of the State of Pennsylvania, passed the twenty fourth Day of February, one thousand seven hundred and eighty five entitled an Act "for directing the Mode of distributing the Donation Lands, promised to the Troops by this Commonwealth," and by Order of the Surveyor General, with the Approbation of the Honorable the Executive Council, I have surveyed on the 21st. Day of October, one thousand seven hundred and eighty five, the above discribed Tract of Two hundred Acres of Land and Allowance for Roads, &c. N° 636. situate in District N° III on the West Side of the Alligany River, in the County of Westmoreland.

To John Lukens Esq. Sur. Gen.

G. Evans

D. Surv?

IN TESTIMONY that the above is a copy of the original remaining on file in the Department of Internal Affairs of Pennsylvania, made conformably to an Act of Assembly approved the 16th day of February, 1833, I have hereunto set my Hand and caused the Seal of said Department to be affixed at Harrisburg, this third day of April 1907

Geo. W. Evans
Secretary of Internal Affairs.